



Part of the DB Group

PRODUCT DATA SHEET

PS LIQUID RETARDER

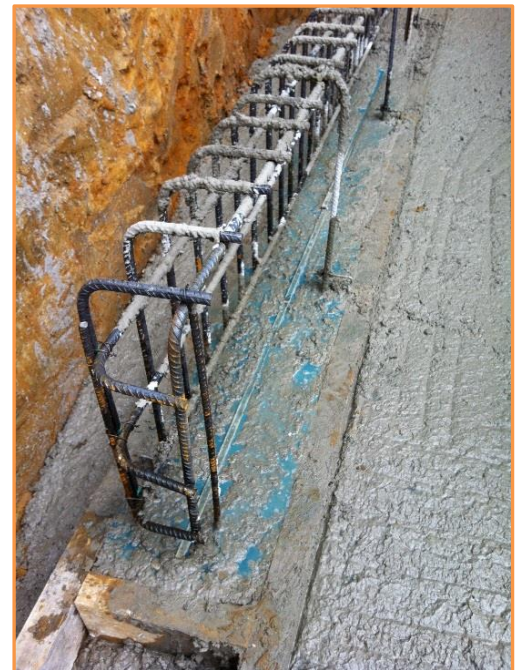
DESCRIPTION

PS Liquid Retarder has been formulated as a blue aqueous liquid designed to be a sprayed application on top face of horizontal cast concrete.

PS Liquid Retarder produces an exposed aggregate finish suitable for keying construction joints or to enable excellent bonding of subsequent coatings or toppings.

ADVANTAGES

- Easily spray applied on to fresh concrete surfaces with a plastic sprayer.
- Coloured blue to assist with uniform application.
- Uniform depth of retardation/ exposed aggregate.
- Accidental contact with reinforcement will not impair bond or reinforcement to concrete as reversion will occur.
- Non-staining, suitable for pre-cast or in situ concrete
- Water based environmentally friendly product with no flammable or toxic solvents present.
- Alleviates the necessity of mechanical tooling/scabbling and eliminates the associated health risks.



PROPERTIES

Appearance:	Blue aqueous solution
Freezing Point:	0°C
PH:	7.5
S.G. @ 15.5°C:	1.08

APPLICATION

PS Liquid Retarder should be spray applied using plastic sprayer to fresh horizontally cast concrete at a rate of 3-5m²/ltr immediately after compacting with a wooden float, avoid using a steel trowel as this may seal the surface and negate the retarding action. Direct sunlight or high temperature will also reduce the retarding time.

Avoid application to free standing/bleed water. During curing period, protect treated surface from rain and frost. Once the bulk of the concrete has set, the retarded matrix should be removed by hosing/brushing to expose underlying aggregate. Removal should take place between 8- 20 hours. All equipment should be cleaned with water following application.

COVERAGE & YIELD

PS Liquid Retarder should be spray applied by plastic pneumatic spray equipment at the rate of 3-5m²/ltr. The depth of exposure is governed by the cement content, w/c ratio etc. Trial casts should be assessed prior to use.

ANCILLARY PRODUCTS

- Surestop Voidformer



Part of the **DB Group**

PRODUCT DATA SHEET

LIMITATIONS

Certain concrete admixtures will hinder the retarding action as will mix designs that contain OPC replacement such as GGBS, PFA and other Pozzolans, again evaluate prior to use.

STORAGE & HANDLING

- No special storage facilities needed.
- Avoid freezing temperatures.
- Spillages should be washed down to avoid slippery surfaces.

PACKAGING & TRANSPORT

PS Liquid Retarder is supplied in 25kg tubs. Do not dilute. Not regulated for road transport.

HEALTH & SAFETY

Refer to separate material safety data sheet. Copies available upon request.

QUALITY ASSURANCE

Products are manufactured under quality assured schemes.